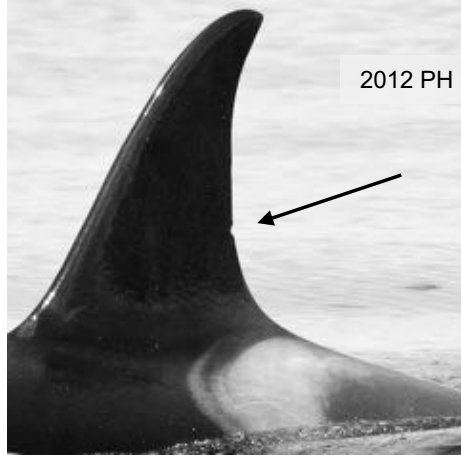


AF22 POD

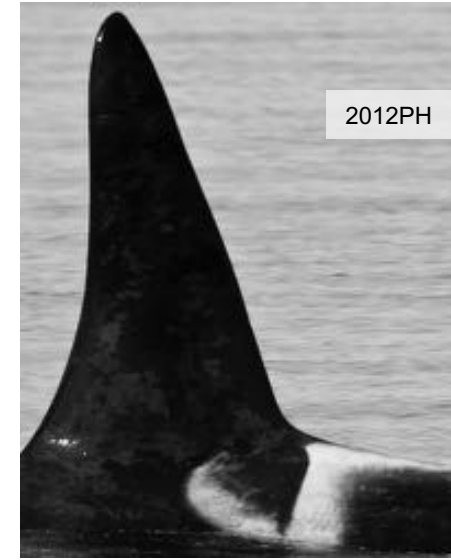
Most commonly seen in southeastern AK; rare in PWS/KF

To siblings AF 10, AF 40

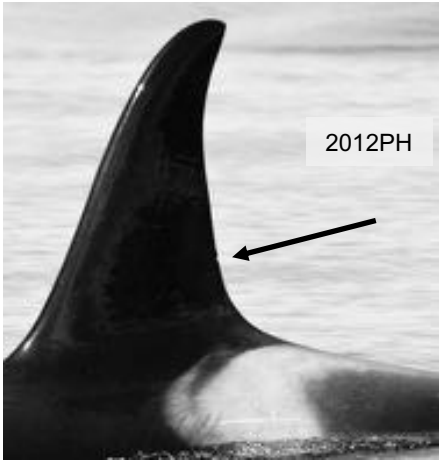


AF 8 (1970)
Steller

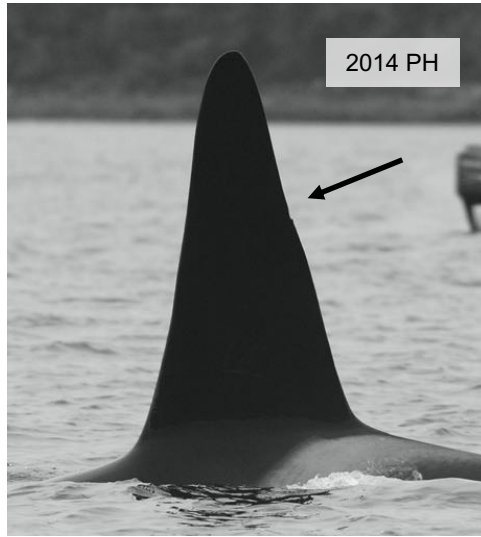
AF 19 (est 1982)
Sergius



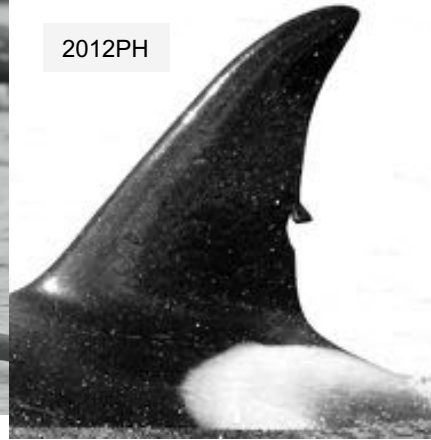
AF 21 (1985)
Strawberry



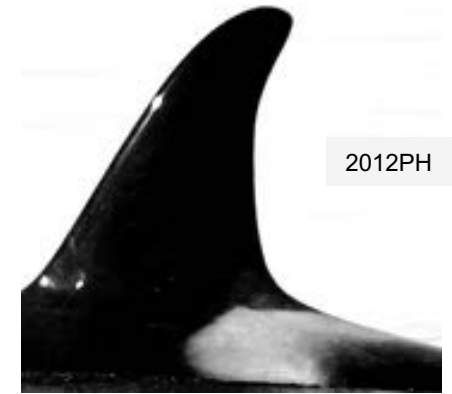
AF 26 (1989) *Tidal*



AF 47 (1996)
Lituya



AF 67 (2001) *Nevsky*



AF 89 (2008-9)
Nebulosa

AF 71
(2003-2004)



AF 103
(2013)



AF22 POD

To sibling AF 8

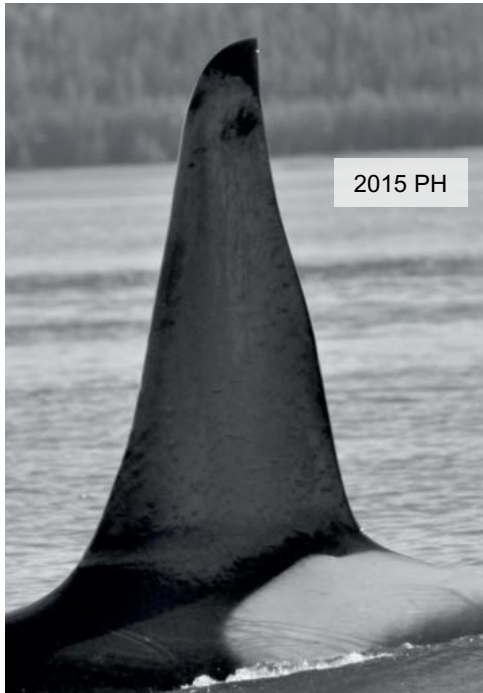


AF 10 (1977)
Dundas



AF 40 (1992)
Elfin

AF 30 (1990) *Seclusion*



AF 46 (1996)
Chilkat



AF 64
(1999-2005)



AF 70 (est 2002)
Gyatso

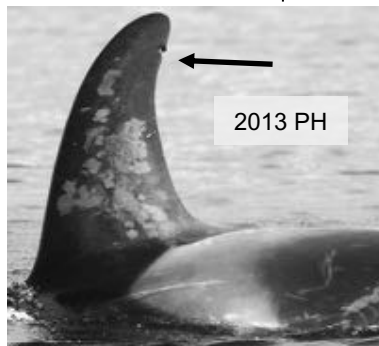


AF 91 (2009-2010)
Maathai

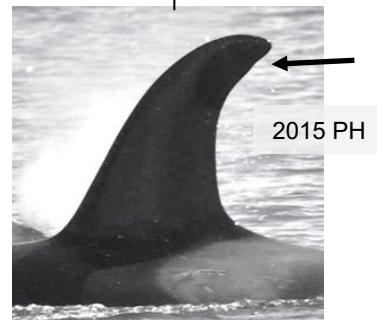
AF 99 (2012) *Cove*



AF 86 (2008) *Remi*



AF 98 (2012) *Abu*



AF22 POD

AF 4 (1965)
Inian

*Probable sister
of AF22*

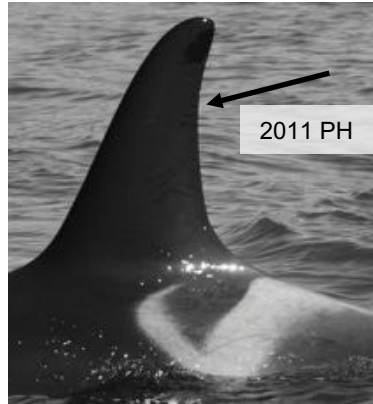


Missing 2019?
Last photographed 2014?

2010 PH

To younger offspring of AF 4

AF 28
(1988) *Nunatak*



2011 PH

AF 69 (2003)
Latissimus

Sprouting 2017

AF 85 (2006) *Sunny*

AF 87 (2009) *Avaaz*

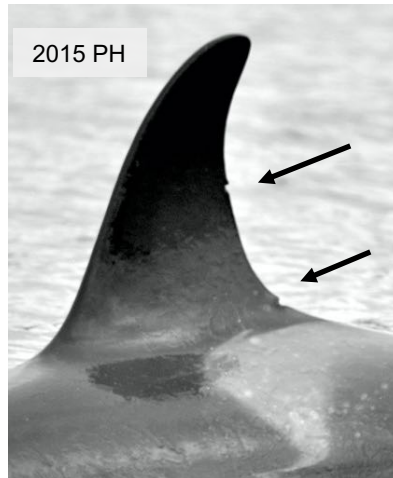
AF 97 (2012) *Daffodil*

AF 114 (2017)
Magni



2012 PH

Fin curved right



2015 PH



2013 PH



2015 PH



AF22 POD

AF 4 (1965)
Inian

Missing?

Photo previous page

To AD 28, older offspring of AF 4

AF 65 (*est 1997*) *Esquibel*



AF 66 (2000) *Orcalicious*



AF 80 (2004) *Elovooi*



AF 90 (2009) *Wangari*



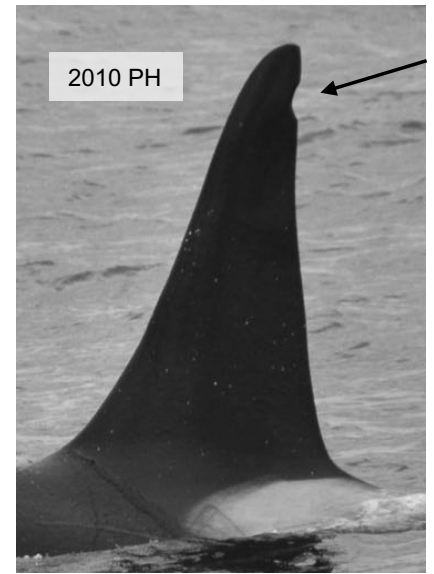
AF 102 (2013)



AF22 POD

AF 6 (est. 1963 – dead 2012)
Ancon

AF 27 (1989)
Halfmoon

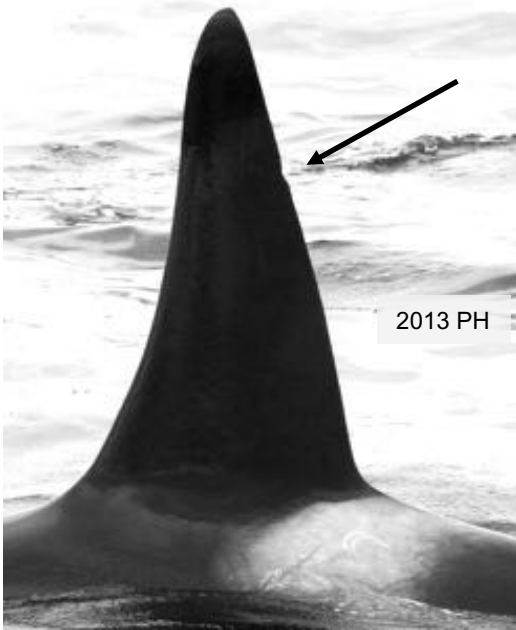


AF 24 (1985) *Sumner*

AF 44 (1992) *Shelter*

AF 45 (1996) *Hoonah*

AF 73 (est 2003) *Ragtag*



AF22 POD

AF 16 (1981)
Muz
Probable
daughter of AF6



AF 62 (est 1997)
Whitecap



AF 63 (2001)
Drip



AF 72 (2004)
Lina



Poss offspring of
AF 16 (2010)